

C.1.2.5.3

SISTEMA INSEDIATIVO STORICO RURALE: evoluzione storica delle infrastrutture ed emergenze architettoniche puntuali del Comune di Casola Valsenio

scala 1:25000

Table listing the responsible offices for different parts of the territory: Sindaco di Faenza, Sindaco di Brisighella, Sindaco di Casola Valsenio.

Legend for the map showing symbols for Communes, Urbanized Territory, Historical Center, and historical evolution of the hydrographic network (existing, abandoned, and secondary channels).

Legend for the historical evolution of infrastructure, showing different types of roads and roads that have disappeared, categorized by the century they were built or abandoned.

Legend for the historical evolution of infrastructure, showing symbols for roads, roads that have disappeared, and railway lines.

Legend for canals, showing symbols for main and secondary canals and schools from different historical periods (Medieval, XVI-XVII, XIX).

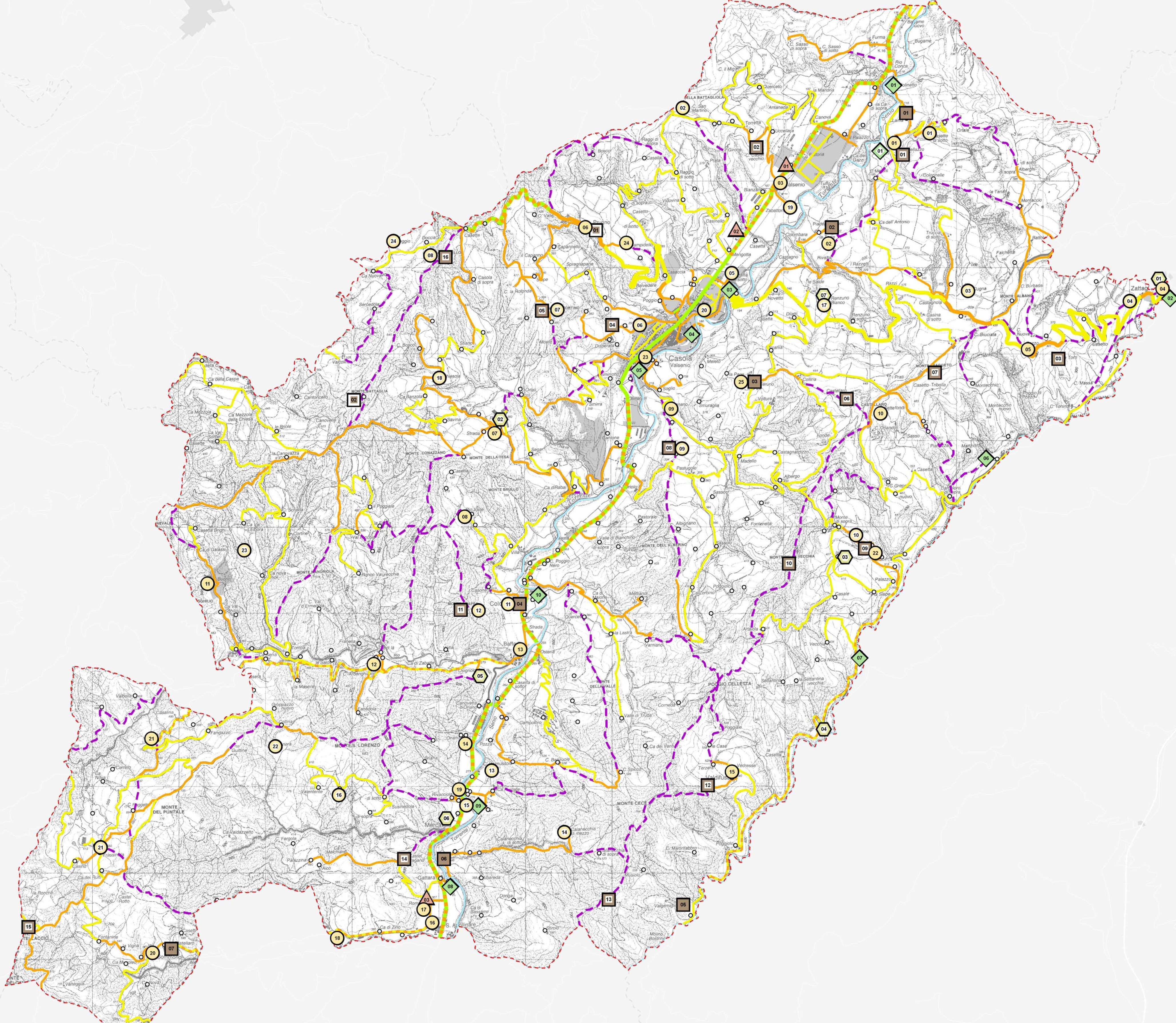
Legend for the typology of historical sites, including existing and disappeared churches, fortifications, hospitals, and archaeological interest sites.

Note

1. Per vedere i simboli cliccate quello che vi interessa e visualizzate come il livello pianificatore è impostato.

2. In funzione del 1954 e del 1955

Table listing various geographical points and their coordinates or names, organized in columns.



MAPPAZZOLO SUL SENO

Main data table listing historical sites with columns for Numero (Number), Identificativo (Identifier), Nome (Name), and Note storiche (Historical notes). It covers various categories like Churches and Oratories, Fortifications, Hospitals, Mills and other Offices, and Villages.